

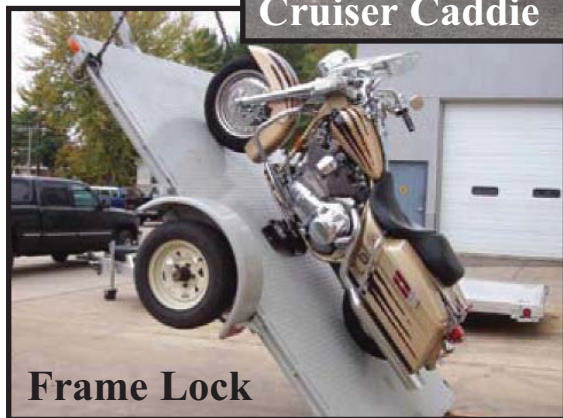
THE ALUMINUM RAMP SPECIALIST and Motorcycle Wheel Chock Superstore™ MOTORCYCLE TRANSPORT SYSTEMS Everything you need to load, secure, & transport your motorcycle



For information on the
Cruiser Caddie
and **Frame Lock**,
please visit
LocksChocksTiedowns.com



Cruiser Caddie



Frame Lock



888-411-RAMP (7267)
or **856-374-4740**

P.O. Box 1626, Laurel Springs, New Jersey 08021

1722 Hurffville Rd. (Rt. 41), Sewell, NJ 08080

To view our entire catalog, please visit our web site:

LocksChocksTiedowns.com

e-mail: scott@MackieEnterprises.com

Telephone Customer Service hours: M-F 7:00am-9:00pm EST Sat. 7:00am-5:00pm EST

Store Hours: M-F 8:00am-5:30pm EST Sat. 10:00am-3:00pm EST (please call ahead on Saturdays)

Prices effective 4/1/2010 and are subject to change without notice.

ARCHED ALUMINUM RAMPS



712A (left) 724 (right)

712 & 724 combination gives you 36" of width surface.

\$259.00 plus \$35.00 shipping via FedEx Ground



Safety straps (provided) secure ramp to tailgate.



3 Piece Connecting Ramp

2- 712s & 716 (1500 lb. cap.)

LRC3-7 - 7ft. 6" x 40" w \$329.00

LRC3-9 - 9ft. x 40" w 439.00



Connecting Bracket

ARCHED RAMPS: Motorcycles, lawnmowers, tractors, autos and more

(Weight capacities are per pair)

	Single	Pair	Weight
612 - 6ft. 4" x 12"w (1,000 lb. cap.)-----	\$ 79	\$ 155	26 lbs.
616 - 6ft. 4" x 16"w (1,000 lb. cap.)-----	95	179	32 lbs.
712A - 7ft. 4" x 12"w (1,500 lb. cap.)-----	99	189	35 lbs.
712B - 7ft. 4" x 12"w (double rod, 1,500 lb. cap.)-----	125	245	40 lbs.
712C - 7ft. 4" x 12"w (tread plate, 1,500 lb. cap.)-----	155	295	42 lbs.
712D - 7ft. 4" x 12"w (3,000 lb. cap.)-----	149	289	54 lbs.
712 D - - Also available as a sraight, non-arched ramp--	149	289	54 lbs.
716A - 7ft. 4" x 16"w (1,500 lb. cap.)-----	129	245	46 lbs.
716B - 7ft. 4" x 16"w (3,000 lb. cap.)-----	169	335	70 lbs.
716 B - - Also available as a sraight, non-arched ramp---	169	335	70 lbs.
724 - 7ft. 4" x 24"w (1,500 lb. cap.)-----	169	335	67 lbs.
912A - 9ft. x 12"w (1,500 lb. cap.)-----	145	279	50 lbs.
912B - 9ft. x 12"w (3,000 lb. cap.)-----	199	385	78 lbs.
916A - 9ft. x 16"w (1,500 lb. cap.)-----	189	359	53 lbs.
916B - 9ft. x 16"w (3,000 lb. cap.)-----	255	495	60 lbs.
* 1012 - 10ft. x 12"w (1,500 lb. cap.)-----	189	359	65 lbs.
* 1016 - 10ft. x 16"w (1,500 lb. cap.)-----	255	495	73 lbs.



712A 716A 712A

2- 712s & 716 combination gives you 40" of width surface
\$305.00 plus \$35.00 shipping via FedEx Ground



712C

Ideal for loading equipment with small, hard wheels

*Shipped via freight line. All other ramps shipped via FedEx Ground.
All ramps are secured to loading surface with safety strap



1012 912A 712A 612

Illustrating various ramp lengths (shown on a 36" high tailgate)



712A

Illustrating 712A on a 32" high tailgate



444 MCDR (16" high trailer shown)

This ramp is specially designed for loading motorcycles onto trailers. It has built-in extra center support with twice as many crossrods for better footing. For most large cruisers, this ramp will accommodate loading onto surfaces up to 18" high.



744 MCDR (21" high trailer shown)

This ramp is recommended when loading most large cruisers onto surfaces higher than 18" and up to 25". It is designed with twice as many crossrods for better footing. Additional center support ensures loading the heaviest motorcycles.



5244 MCDR

5244 MCDR

This ramp is recommended when loading onto surfaces 12" high or lower. Folds to 22" wide.

FOLDING ALUMINUM RAMPS



844 MCDR

Loading a raked Harley onto an F-250 4x4. 36" high tailgate with tailgate extenders. (see page 4 for tailgate extenders)



844 MCDR

Built-in extra center support with twice as many crossrods as the 844



400

FOLDING RAMPS

ATVs, Landscaping, Snow Blowers, & Motorcycles (MCDRs)

400 - 6ft. x 40"w (1,000 lb. cap.)-----	\$139	27 lbs.
400DR - 6ft. x 40"w (1,000 lb. cap.)-----	179	32 lbs.
444 MCDR - 6ft. x 44"w (1,500 lb. cap.)-----	210	40 lbs.
444 - 6ft. x 44"w (1,000 lb. cap.)-----	155	28 lbs.
5244MCDR - 4 ft. 4" x 44" w (1,500 lb. cap.)-----	189	29 lbs.
644 - 6ft. 4" x 44"w (1,000 lb. cap.)-----	165	30 lbs.
740 - 6ft. 10" x 40"w (1,000 lb. cap.)-----	175	30 lbs.
744 - 6ft. 10" x 44"w (1,500 lb. cap.)-----	210	32 lbs.
744MCDR - 6ft. 10" x 44" w (1,500 lb. cap.)-----	259	42 lbs.
*844 - 7ft. 10" x 44"w (1,500 lb. cap.)-----	245	37 lbs.
*844MCDR - 7ft. 10" x 44" w (1,500 lb. cap.)-----	305	55 lbs.

MCDR= "Motorcycle Double Rod" - For motorcycle center loading with twice as many crossrods and built-in extra center support

DR= "Double Rod" - Twice as many crossrods

EXTRA WIDE FOLDING RAMPS

448H - 6ft. x 48"w (1,500 lb. cap.)-----	\$179	29 lbs.
*748H - 6ft. 10" x 48"w (1,500 lb. cap.)-----	225	33 lbs.
*848H - 7ft. 10" x 48"w (1,500 lb. cap.)-----	255	38 lbs.

Folding ramps are hinged in the middle and fold side-to-side to half their width.

All folding ramps are shipped via FedEx Ground.

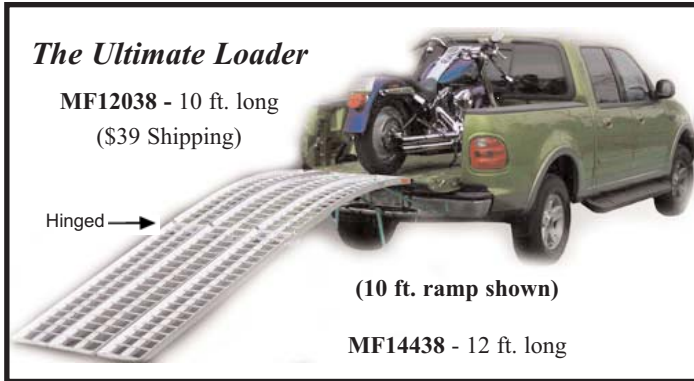
All ramps are secured to loading surface with safety straps.

*Additional shipping charges apply



444, 744, & 844 (shown in background)
644 (shown in use)

COLLAPSING RAMPS



Three-Piece Ultimate Loader - 10 Foot

MF12038 - 3-Piece Arched Collapsing Ramp System
10 ft. x 38" w (1,500 lb.cap.) \$459 --- 72 lbs.

Two-Piece Ultimate Loader - 10 Ft.

MF12038 - 2-Piece Arched Collapsing Ramp System
Pair 10 ft. x 38" w (2,500 lb.cap.) \$489 --- 86 lbs.
Single 10 ft. x 19" w (1,250 lb.cap.) \$265 --- 43 lbs.



Each panel has a 1250 lb. capacity. They can be used together to load a motorcycle or spaced apart to load 4-wheel vehicles. Third panel available for extra wide coverage.

Two-Piece Ultimate Loader - 12 Ft. (not shown) (Shipping cost varies)

MF14438 - 2-Piece Arched Collapsing Ramp System
12 ft. x 38" w (2,000 lb.cap.) \$575 --- 104 lbs.

Each panel has a 1000 lb. capacity. They can be used together to load a motorcycle or spaced apart to load 4-wheel vehicles.

Black Widow - BW10840

9 ft. x 40" w (1,500 lb.cap.) - \$369 --- 104 lbs.

Centerpiece Only

9 ft. x 17" w (1,500 lb.cap.) - \$220 --- 56 lbs.

Also Available - BW9440

7 ft. 10" x 40" w (1,500 lb.cap.) - \$329 --- 80 lbs.

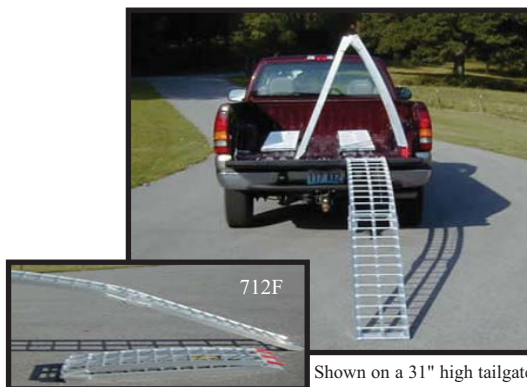
12 Ft. Arched Ramps (not shown)

MF14414 - Single Ramp Only
12 ft. x 14" w (1,200 lb.cap.) \$269 --- 43 lbs.

MF14414-2 - Pair
12 ft. x 14" w (2,400 lb.cap. per pair) \$519 --- 86 lbs.



Shown in contrast w/ the 712F on a 36" high tailgate



Also available in a 3000 lb. cap. (712FH)



Snowmobile Ramp
SR96 (1,250 lbs. cap.) \$379



COLLAPSING RUNNER & SNOWMOBILE RAMPS

R96 - Snowmobile Ramp- 3 Piece - 8 ft. (1,200 lb. cap.) ----- \$379

712F - Arched Collapsing Runner Ramp - 7 ft. 4" x 12" w (1,000 lb.cap./pair)---- 115 (Single)----- 225 (Pair)---- 42 lbs.

712FH - Arched Collapsing Runner Ramp - 7 ft. 4" x 12" w (3,000 lb.cap./pair)-- 175 (Single)----- 340 (Pair)---- 58 lbs.

1012F - Arched Collapsing Runner Ramp - 10 ft. x 12" w (1,500 lb.cap./pair)---- 210 (Single)----- 389 (Pair)---- 74 lbs.

ALUMINUM TRAILER RAMPS



512A

STRAIGHT TRAILER RAMPS: Autos, Tractors, Motorcycles

*capacities are per pair

	Single	Pair	Weight
512A - 5ft. x 12"w (2,500 lb. cap.)-----	\$85	\$165	25 lbs.
512AA - 5ft. x 12"w (with solid plate at top)---	89	169	27 lbs.
512B - 5ft. x 12"w (5,000 lb. cap.)-----	129	235	33 lbs.
512C - 5ft. x 12"w (10,000 lb. cap.)-----	159	295	41 lbs.
516A - 5ft. x 16"w (2,500 lb. cap.)-----	119	225	32 lbs.
516B - 5ft. x 16"w (10,000 lb. cap.)-----	195	365	49 lbs.

FLIP UP WHEEL CHOCK



- Constructed of strong 10 gauge steel
- Black powder coated for style and durability
- Simple installation creates a flush surface
- Locate floor beams and cut a 7" x 20" opening. Drop in chock and bolt using predrilled flange holes.
- Utilize as a storage compartment for your tiedown straps

Steel

24" P/N 9324-FUS \$59.95

16" P/N 9316-FUS 49.95

With Aluminum Door

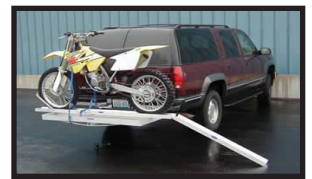
24" P/N 9324-FUA \$(TBA)

16" P/N 9316-FUA (TBA)

*Recessed dimensions: 24" - 7"w x 20"l x 2"d
16" - 7"w x 14"l x 2"d

ALUMINUM CARGO CARRIER

Made for automobiles with a 2" insert type hitch. Made of aluminum for light weight, nice appearance, and no rust. Will carry up to 500 lbs. (If hitch is rated for 500 lbs.). Ready for you to insert in the 2" hitch, all welded aluminum product needs no assembling.



Cargo Carrier
60" l x 24" w x 5" h
500 lbs. load cap.
P/N 524ACC
\$159.00

Motorcycle Adapter for Cargo Carrier

P/N 524ACC MA5 **\$105.00**
P/N 524ACC MA7 **125.00**
Made with a 5" aluminum channel. Will accept up to a 140mm tire. Built-in wheel chock.



LOW-PROFILE WHEEL CHOCKS

(Imported)

Permanent
(P/N 91550-55)
\$29.95

These chocks are designed for sport bikes. Most sport bikes have large rotors (break disks) and will hit the sides of the high-profile M&R and Pingle chocks. Will work with any motorcycle that fits into a 5 1/2" chock.



Repositionable
(P/N 91500-55)
\$39.95



Low-Profile Repositionable
(For E Track Only)

Made
in the
USA!



M&R Low-Profile Removable

LOW-PROFILE WHEEL CHOCKS

Repositionable

Removable (P/N 91596-LP)
\$54.95

These chocks are designed for sport bikes. Most sport bikes have large rotors (break disks) and will hit the sides of the high-profile M&R and Pingle chocks. Will work with any motorcycle that fits into a 5 1/2" chock.

M&R Low-Profile

Removable (P/N 91594-LP)
\$56.95

Permanent (P/N 91595-LP)
\$44.95

888-411-RAMP (7267)